

Diverting Mattresses in Kansas City

MORA Conference, August 10, 2017

Two Agencies

Avenue
of Life
Recycling

Sleepy-
head
Beds
Reuse



Projects supported in part by:



This project was funded in part by the Missouri Department of Natural Resources.

Research

2013 - District staff researches mattress recycling

- Department of Corrections; Hutchinson, Kansas
- St. Vincent de Paul; Lane County, Oregon
- DR3; Oakland, California

Hutchinson, Kansas



Metal ready for market



Wood products made from old mattresses.



Guest Speakers at the MARC SWMD

Terry McDonald

Executive Director of St. Vincent De Paul, Lane County

In addition to providing a benefit for the planet St. Vincent's de Paul's mattress recycling program creates entry-level jobs for ex-offenders and others who have trouble finding work. They pay above minimum wage, provide benefits such as health care, and give people transferable skills that can help them find good-paying jobs in the community.

Neil Seldman

Co-Founder of the Institute for Local Self-Reliance

Neil directs the Recycling and Economic Growth Initiative. He specializes in helping cities and businesses recover increasing amounts of materials from the waste stream and add value to the local economy through new processing and manufacturing facilities.

Oakland, CA





Spinning
Table



Cotton Bales

Materials

Commodities

- Wood
- Metal
- Polyester
- Cotton
- Foam

Hard to Recycle

- Coir
- Shoddy



Foam

Metal



Cotton



Topping (Polyester)

Hard to Recycle Materials

Shoddy



Coir



Avenue of Life

Established in 2013

Ribbon Cutting for
Mattresses
November, 2014



Avenue
f Life

"breaking the cycle of poverty
through community development"

Deconstruction



Equipment

- (3) Balers
- (2) Forklifts
- (1) Shearer
- (2) Trucks
- (1) Loading ramp
- (2) Containers

Upcoming:
Rotary shears and
spinning tables



Feedstock

Residential –

- drop off and pick up

Hotels:

- Holiday Inn
- Marriott
- Comfort Suites

Retail:

- IKEA
- Crowley Furniture
- Consillium Group
- Burlington Mattress Company- 123 Mattresses
- Joplimo Mattress
- Sleep Number Beds
- Mattress City
- Custom Sleep Center

Universities:

- UMKC
- Rockhurst






Permanent Collections

- Summit Waste Systems – Landfill
- Republic - Courtney Ridge Landfill
- City of Kearney Recycling Center
- City of Excelsior Springs Recycling Center



Other Partners

- EIERA
 - MARC SWMD
 - MDNR
 - City of Kansas City
 - City of Riverside, Mo
 - Department of Corrections
 - Research Medical Center
- 

End Markets

Wood – Mulch, and dog beds

Metal – Scrap Metal

Cotton – Industrial Filters

Polyester – Textile markets

Foam – backing for carpets



Making a Dent

- 3,880 tons of mattresses diverted
- 600 - 1000 mattresses deconstructed weekly
- Currently 12 people employed FT
- 26 people trained and employed elsewhere
- Revenue expected to cover 80% of program by the end of 2017
- Outreach in 2016: 6 municipalities, 6 schools, 24 churches and 24 businesses



Sleepyhead Beds

Established in 2010

Volunteers removing
mattresses from a hotel in
Westport.

Avenue of Life and
Sleepyhead partnered on
this effort.



Reuse

In 2010 Sleepyhead Beds was born and during its first year provided 1,200 beds to Kansas City area children.

Since then, 12,000 beds have been delivered to Kansas City area children and their parents.

That equals to about 330 tons. (average weight of 55 pounds per mattress)



Feedstock



End Markets



A Thankful Family



Bedding

- Used and new sheets of all sizes
- Used and new blankets of all sizes
- New Pillows
- Pack-n Plays



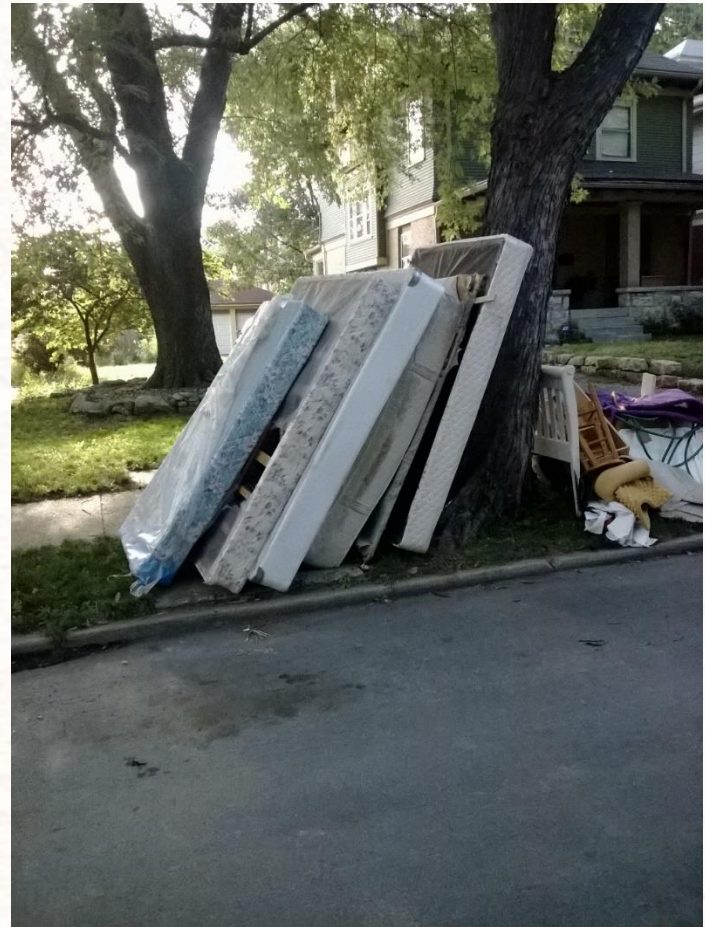
Partners

- Beds & Recycling - Avenue of Life
- Beds - Prime Sleep
- Pack n Play Program - Children's Mercy Hospital
- Volunteer Groups



Dreams

- Collaboration between Avenue of Life and the City of Kansas City, MO for bulky item pick up at the curb.
- Sleepyhead and Avenue at collection events together
- More partnerships with haulers, transfer stations
- More drop-off locations



Questions?

Nadja Karpilow
karpilow@marc.org

816-701-8226