



MATTRESS RECYCLING IN KANSAS CITY, MO

Collaborating
for jobs and the
environment.

COLLABORATION AND PASSION: A RECIPE FOR SUCCESS

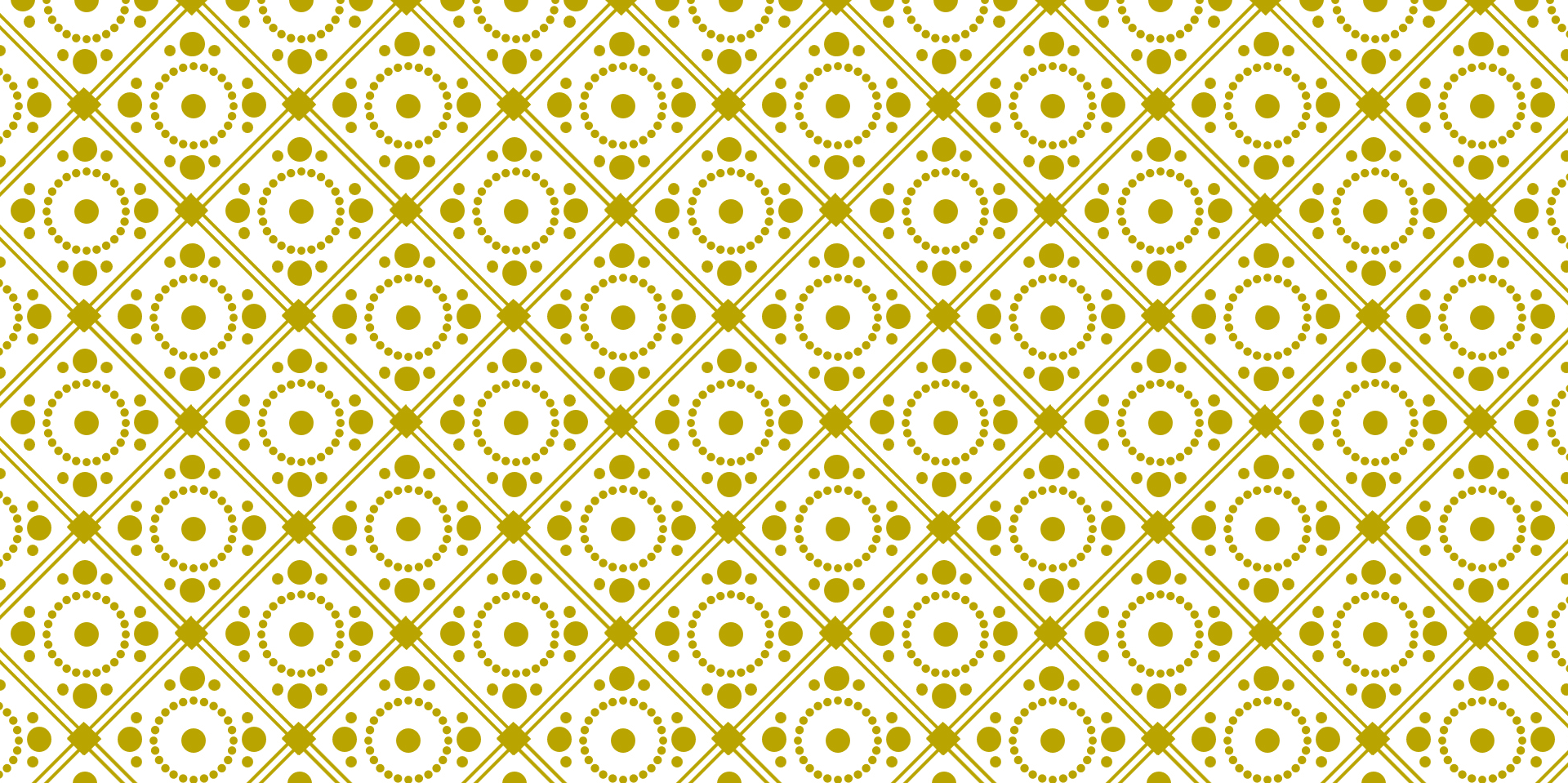
The Idea

Research

Engagement

Partnerships

- MIX WELL
- BOIL and SIMMER
- ADD PARTNERS GRADUALLY



THE IDEA



THE IDEA

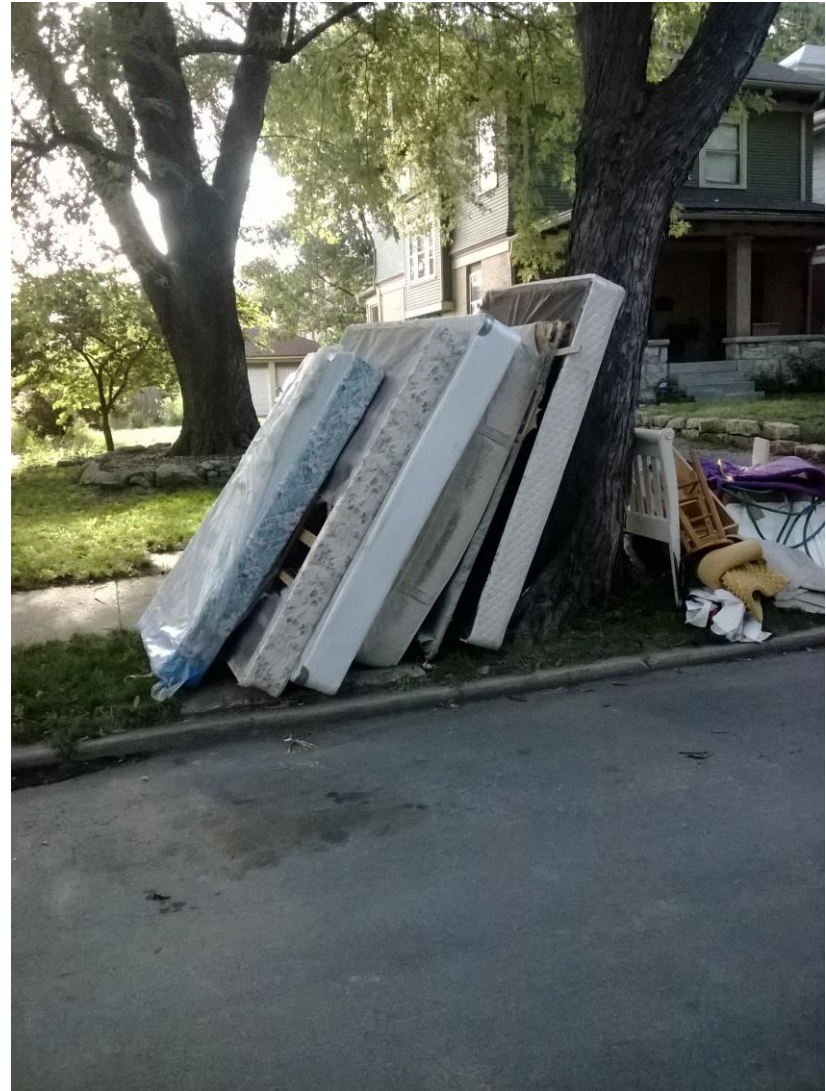
Mattress recycling programs
starting up nationwide –

WHY CAN'T WE?

WHY?

Mattresses take up about 23 cubic feet of landfill space.

Landfill operators do not like mattresses since they do not compress and can damage equipment.



RECYCLABLE

Mattresses
contain
recyclable
material.



MATTRESS UNVIELED

This photo shows the layers of materials in a mattress.



COMMODITIES

Foam

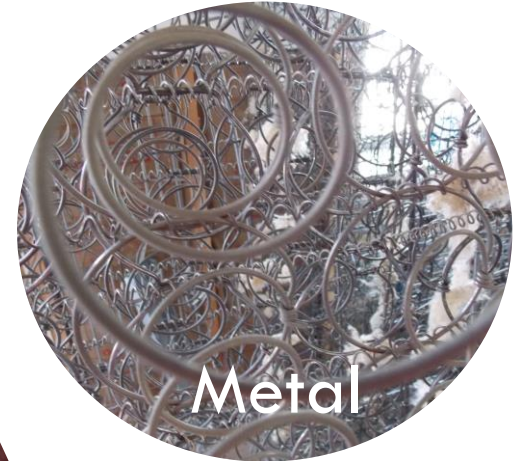
Polyester

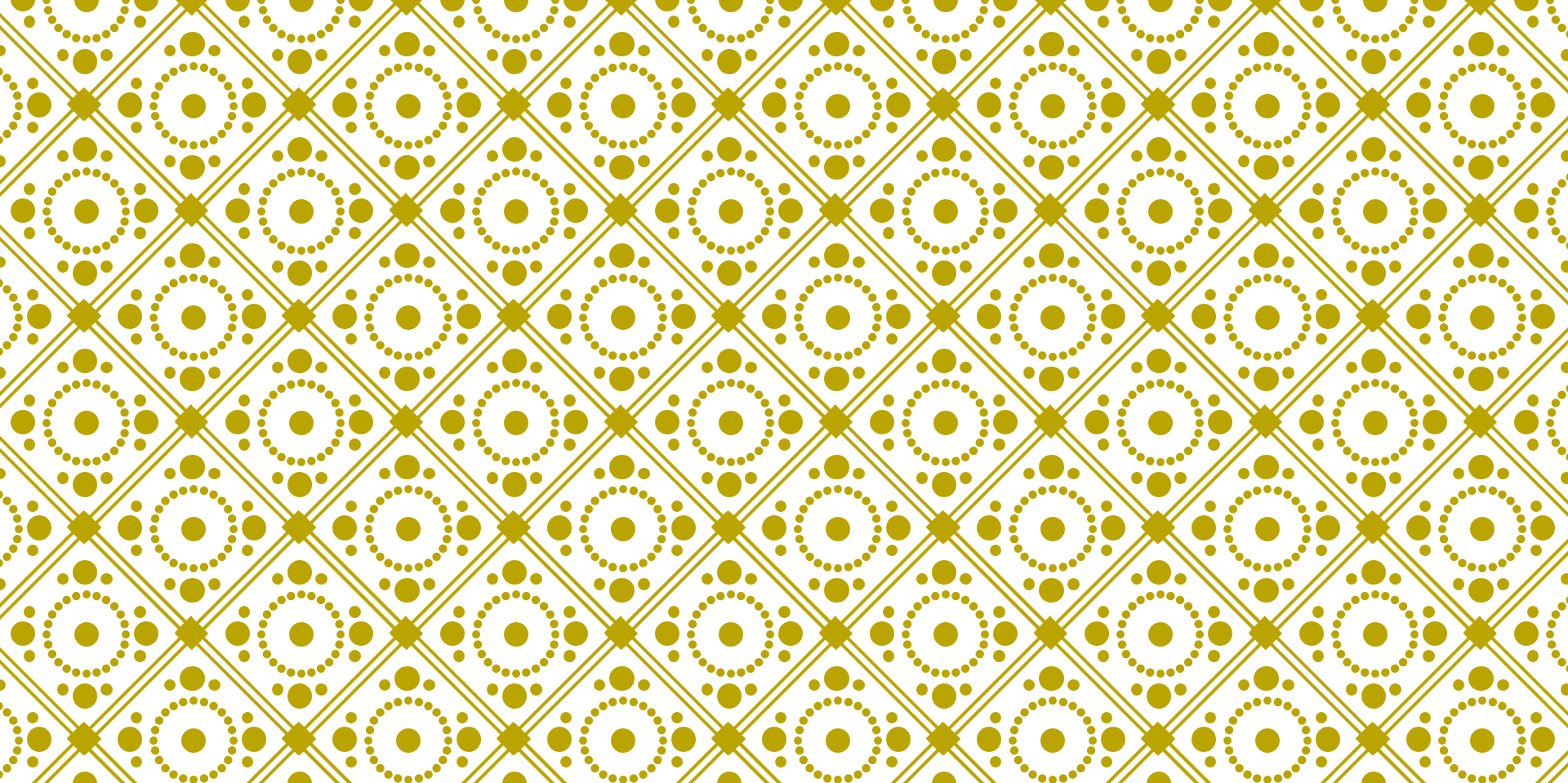
Cotton

Metal

Wood

Shoddy





RESEARCH





NATIONAL NEWS

MATTRESS RECYCLING LAWS

CREATES ORGANIZATION TO COLLECT AND PROCESS
DISCARDED MATTRESSES.

CONNECTICUT, JUNE 2013

RHODE ISLAND, JULY 2013

CALIFORNIA, SEPTEMBER 2013



ACTIONS

Read about and called new start-ups around the country.

Met with representatives from Springback Recycling, Nashville, TN

Researched end-markets - called companies such as Legget and Platt

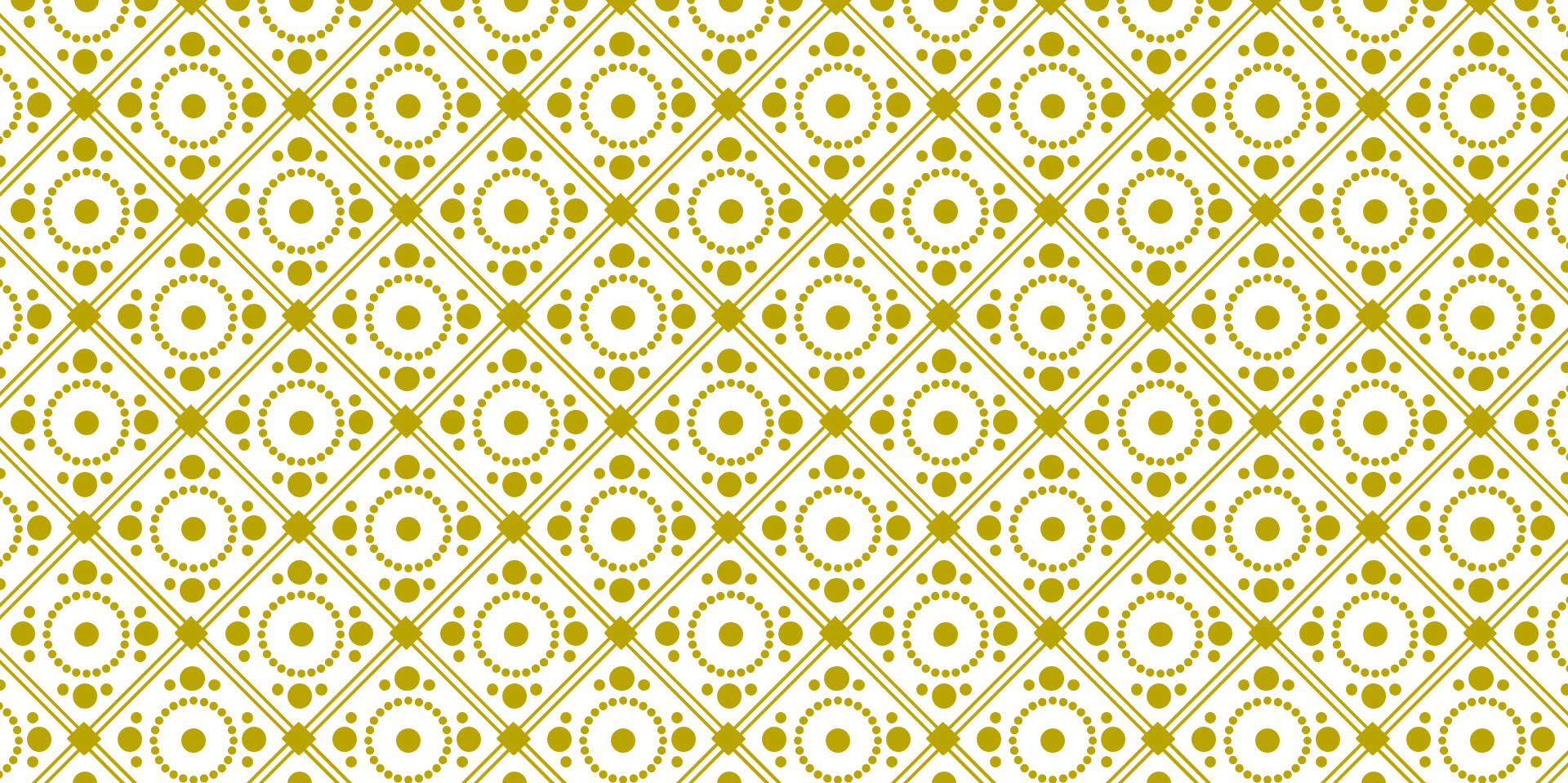
Talked with landfill and transfer station operators

Reached out to municipalities to gauge interest

Called universities, hotels, and hospitals

Called retail operations

Talked with business entrepreneurs



ENGAGEMENT |

ENGAGEMENT

- Meetings called to explore new materials for recycling.
- Invited all sheltered workshops in the area.
- Invited organizations affiliated with helping the homeless.
- Coordinated field trip to Hutchinson.
- Brought in speakers from SF Bay Area, Oregon, and Washington DC.



ROAD TRIP TO HUTCHINSON, KS

CORRECTIONAL FACILITY



Minimum security prison recycles mattresses collected from 13 county public works departments and transfer stations.

ROAD TRIP

Eye-opening
experience



ROAD TRIP

De-manufacturing in Action



Labor
intensive

Separating metal
from wood

ROAD TRIP

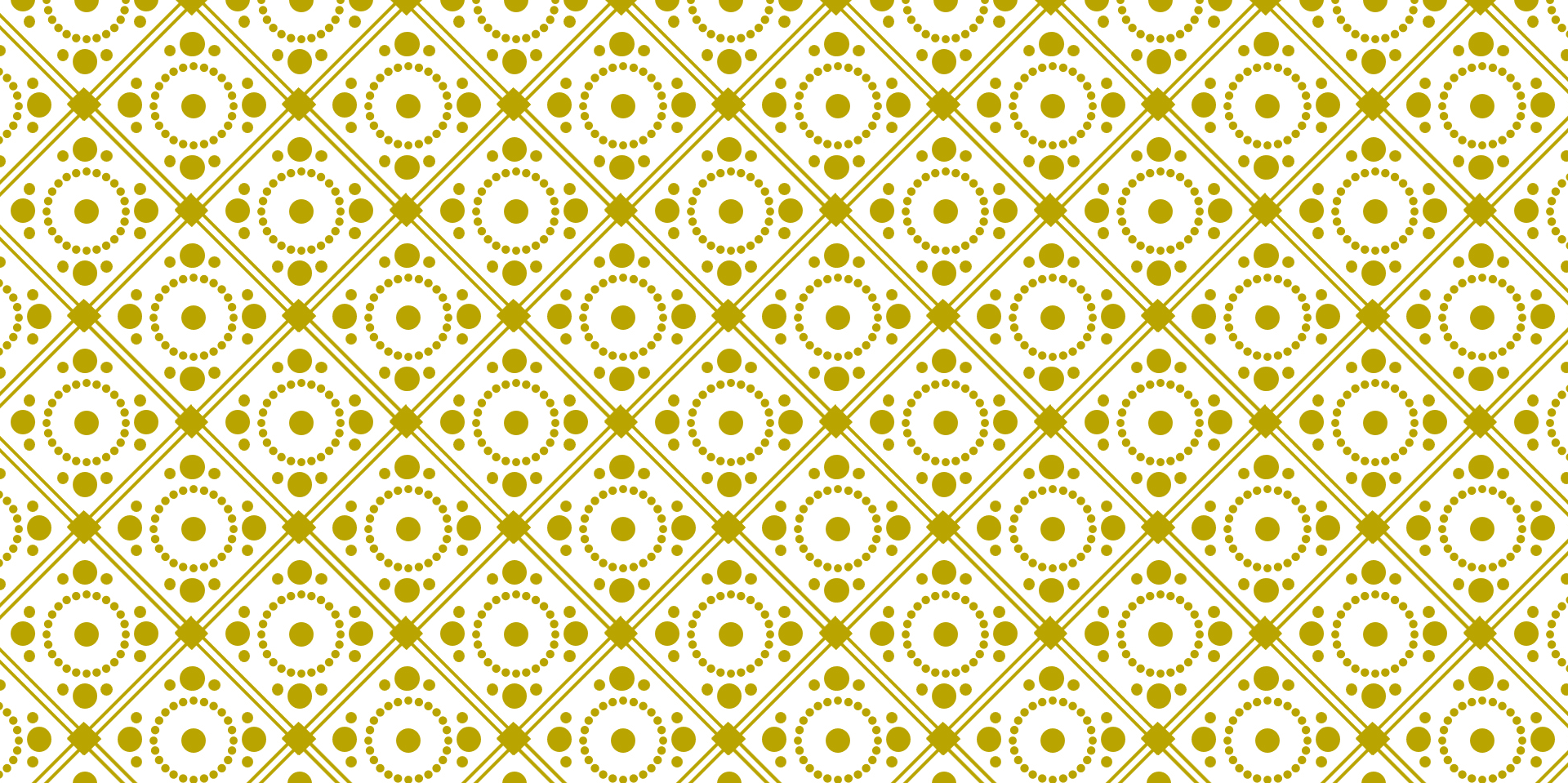


Closing the Loop

Finished products:

Chairs, benches,
planters, chest boxes





PARTNERSHIPS



MAKING THE CONNECTION

Terry McDonald of St. Vincent de Paul of Lane County, Oregon came to Kansas City and met with interested persons after his group presentation.

Desiree, district staff and Terry talked mattresses.

It was then the dream started to unfold.



PARTNERSHIPS

- Kansas City, Missouri
- Other Municipalities
- Sleepyhead Beds
- Landfills
- EI ERA
- Volunteers



KANSAS CITY, MO

The Facility: reuse and revitalization

- Former MODOT building
- Access to I70
- Bus line



MUNICIPALITIES

Staffed and fenced drop-off recycling centers function as collection points for residents to drop off their mattresses.



SLEEPYHEAD BEDS

Sleepyhead Beds is a non-profit started in 2010 with the mission to provide beds to kids in need.

By joining forces, Avenue and Sleepyhead have increased their volunteer base, increased the number of people they can serve, and increased diversion from the landfills.



SLEEPYHEAD BEDS (CONT.)



Collaboration in action

On June 16, 2014, volunteers from Sleepyhead Beds and Avenue of Life met at the Q hotel in Kansas City and loaded 180 units for reuse and recycling.

LANDFILLS

Mattresses are collected at Courtney Ridge Landfill, owned by Republic Services. Within the first week, 39 mattresses filled the container.

The Lee's Summit Landfill has placed a container as well.



EIERA

The EIERA
awarded
Avenue of Life
with a grant
for equipment.

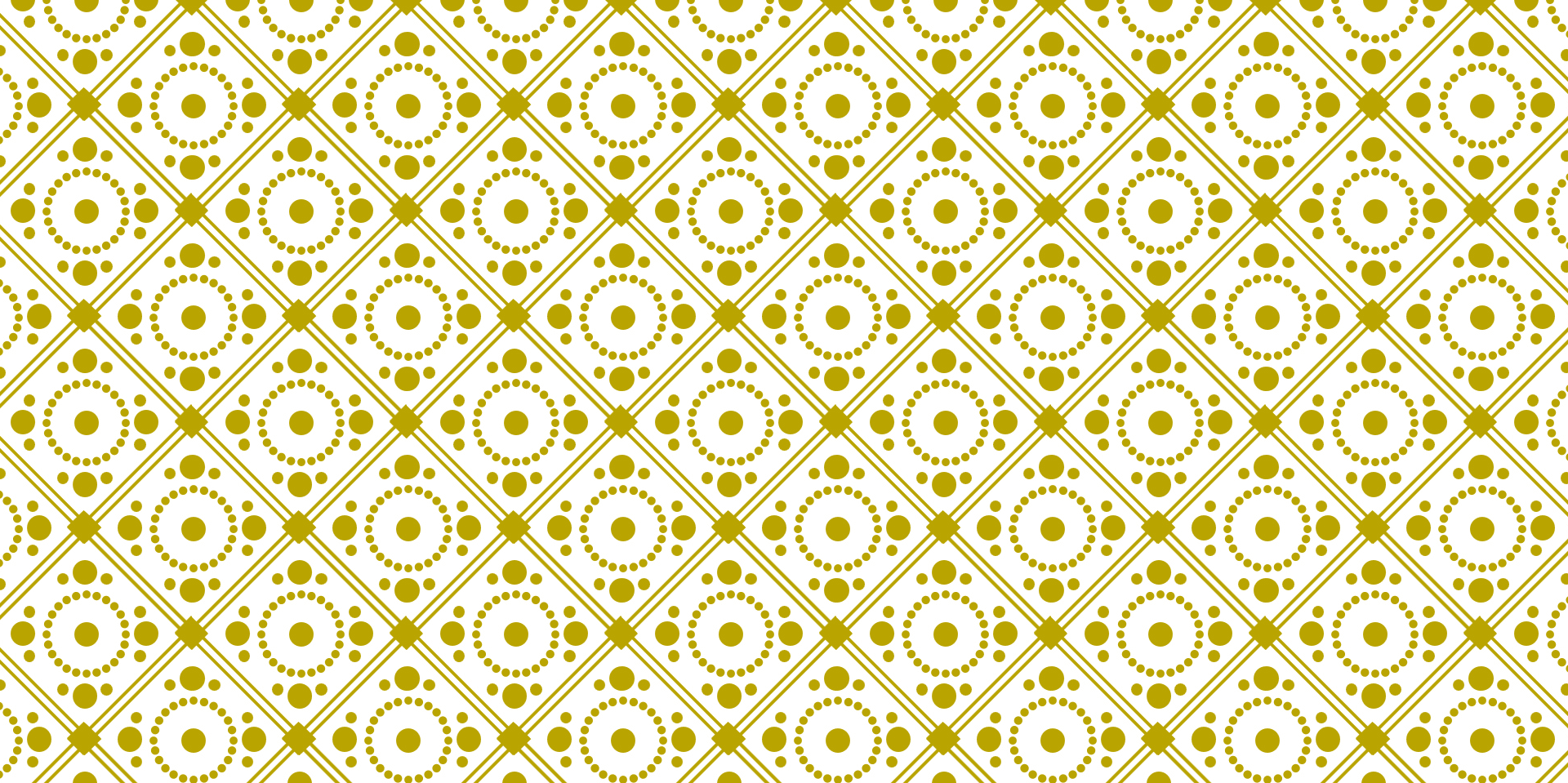


VOLUNTEERS

Avenue of Life has a strong volunteer base from:

- Corporations
- Religious groups
- Schools
- Individuals from private and public sector





FUTURE PLANS



ADDITIONAL COLLABORATIONS

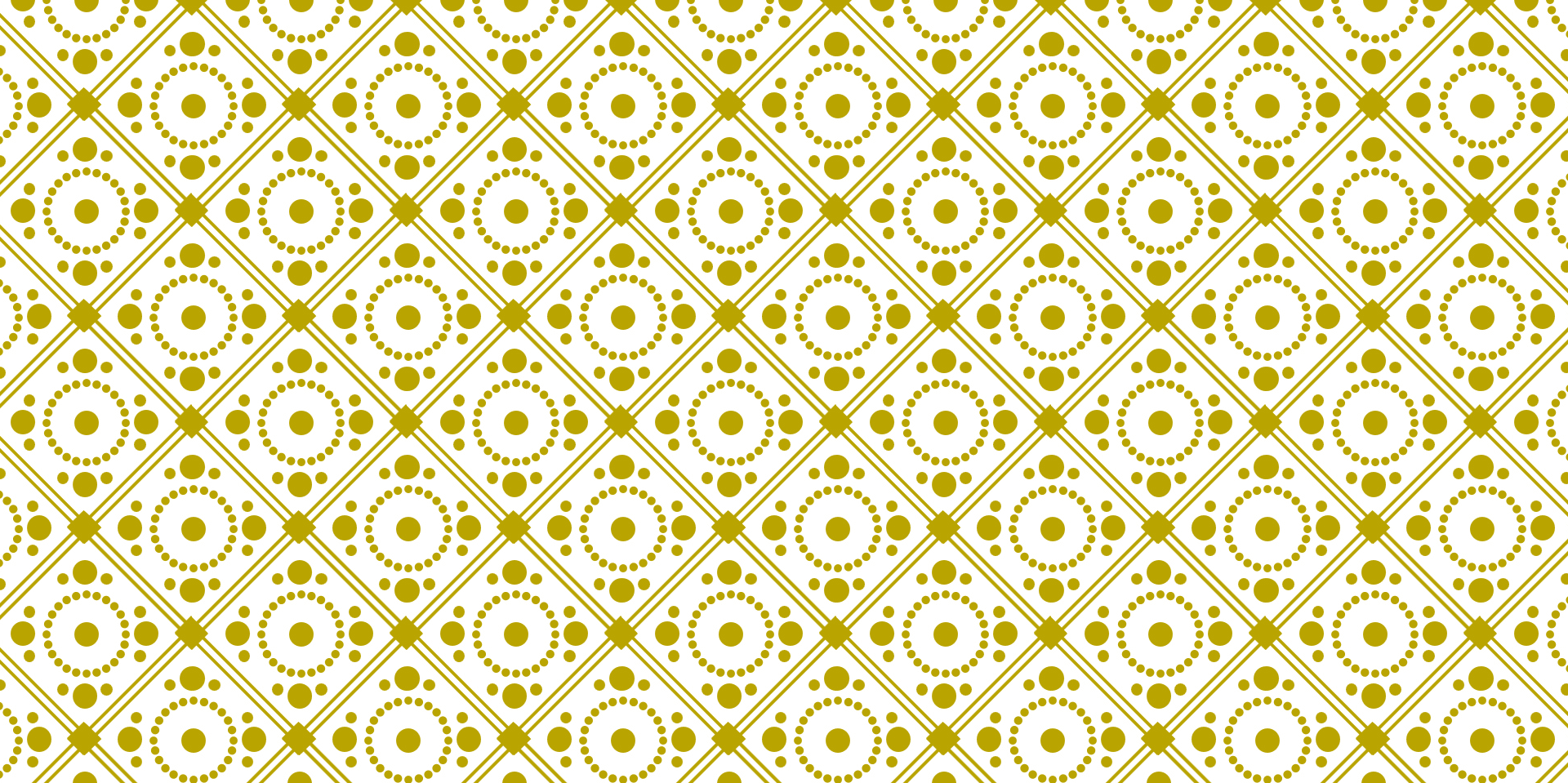
Possible
avenues for
feedstock.



BED BUGS

- Mattresses with bedbugs exist, but are not as big of a problem as people think.
- Avenue of Life has a plan





PROJECT OUTCOMES



OUTCOMES

- Resources for recycling with stable markets and end products
- Job training opportunities
- Conservation of landfill space
- Building reuse and urban revitalization
- Positive community response.

THANK YOU

Desiree Monize, Executive Director
Avenue of Life
816-519-8409
desireemonize@gmail.com



Nadja Karpilow, AICP
Environmental Planner III
MARC Solid Waste Management District
816-701-8226
karpilow@marc.org

Re·think



Re·do



Re·new



Mid-America Regional Council
Solid Waste Management District